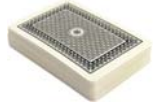


*"The Friendly Club For All Levels of Play"*

# FORT LAUDERDALE BRIDGE CLUB

May 2008  
Newsletter

700 NE 6TH TERRACE • FORT LAUDERDALE, FL 33304  
TELEPHONE: 954-761-1577 WEB SITE: [www.ftlbc.com](http://www.ftlbc.com)



## WEEKLY SCHEDULE

	SUN	MON	TUE	WED	THU	FRI	SAT
Afternoon	1:00pm Brunch Noon	12:30pm Lunch 11:30	12:30pm Lunch 11:30	12:30pm Lunch 11:30	12:30pm Lunch 11:30	12:30pm Lunch 11:30	12:30pm Lunch 11:30
Evening	6:30pm	No Game	7:00pm	No Game	7:00pm	No Game	7:00pm

**DUPLICATE GAMES:** All games ACBL sanctioned.  
Card Fee: \$4 Member/\$6 Guest /\$5 Triple Point

**NON-LIFE MASTERS' GAMES:** 12:30 on  
Tuesdays, Wednesdays and Fridays.

**SOCIAL BRIDGE** (Bridge Connection): 12:30 on  
Mondays and Thursdays.

**SCRABBLE:** Thursdays at 6:15. Call Claire Ullman  
by noon at 954-537-2755.

Triple point games every afternoon and evening game. \$5 entry fee

## LESSONS AND LECTURES

**Lois Redlick:** Intermediate/beginning classes Saturday, 9:30-11:30 am. \$8 per lesson. Social bridge games Mon. and Thur. 12:30-3:30pm.-refreshments served. Call Lois for details: 954-565-3127

**Carl Cronrath:** Free Lecture: Tuesday mornings 11:45am-12:15pm.

### Manager's Corner

We are in between managers as this newsletter goes to print. Rhoda will be orienting our new Manager, Carl Cronrath, during the first 2 weeks of May. Please give our new manager a warm welcome and realize he has a lot to absorb and learn about our club.

Susie Brucker, our Food Service Contractor, has announced a new (off-season) menu effective May 5th.  
Sundays - will be brunch as usual with Rhoda.

Monday, Wednesday and Saturday - Buffet of hot dogs, lettuce, tomato, onion, cheese, lunch meat platter, salad, tuna fish, coleslaw, chips, dessert and fruit.

Thursday - Same as MWSat buffet plus a fish, and starch.

Friday - Fish, chicken and veggies as well as the MW Sat buffet.

There will be no evening meals until the month of October.

Saturday, May 3 at five o'clock will be the start of the Kentucky Derby Party. It's always a fun affair. The party starts at 5PM with appetizers and mint juleps. Setups will also be provided. Dinner at 6PM for a cost of \$8 and a triple point charity game at 7PM for \$5.

Mother's Day on May 11 will start with Bloody Mary's. Regular brunch will follow. The cost is \$8.

Memorial Day, May 26 at 5:00pm our party will start. BBQ and bridge—what a combination!

Looking ahead to June...the worldwide bridge contest will be on Friday, June 6 at 7:00pm and Saturday, June 7 at 12:30pm. Hand records and analysis sheets after the game.



### Upcoming Events

May 3 - 5pm Kentucky Derby Party • May 11 - 12 noon Mother's Day Brunch • May 17 - 10am BOG Meeting • May 26 - 5pm BBQ & Bridge