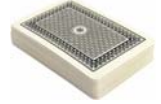


FORT LAUDERDALE BRIDGE CLUB

May/June 2007
Newsletter

700 NE 6TH TERRACE • FORT LAUDERDALE, FL 33304
TELEPHONE: 954-761-1577 WEB SITE: www.ftlbc.com



WEEKLY SCHEDULE

	SUN	MON	TUE	WED	THU	FRI	SAT
Afternoon	1:00pm Brunch Noon	12:30pm Lunch 11:30	12:30pm Lunch 11:30	12:30pm Lunch 11:30	12:30pm Lunch 11:30	12:30pm Lunch 11:30	12:30pm Lunch 11:30
Evening	6:30pm (no meal served)	No Game	7:00pm light sup- per 6:00	No Game	7:00pm (no meal served)	7:00pm (no meal served)	7:00pm light up- per 6:00

DUPLICATE GAMES: All games ACBL sanctioned.
Card Fee: \$4 Member/\$6 Guest /\$5 Triple Point

NON-LIFE MASTERS' GAMES: 12:30 on Tues-
days, Wednesdays and Fridays.

SOCIAL BRIDGE (Bridge Connection): 12:30 on
Mondays and Thursdays.

SCRABBLE: Thursdays at 6:15; \$5 dinner (5:30).
Call Claire Ullman by noon at 954-537-2755.

CLUB CHAMPIONSHIPS: May 1 ; May 19 ; May 23; June 7; June 12; June 16; June 27

Triple point games every Sunday at 6:30 and Tuesday, Thursday and Friday at 7:00. \$5 entry fee.

LESSONS AND LECTURES

- Lois Redlick:** Saturday morning intermediate class. Saturday afternoon beginner class. Tuesday night advanced beginner intermediate. Call Lois Redlick for details: 954-565-3127
- Rich Waugh:** Free Lecture: Tuesday mornings 11:45-12:15. Visit his website at: www.bridgeace.com
- Jim Lackey:** Free Lecture, Saturdays 11:45-12:15

Rhoda's Corner By Rhoda Schreider

The crowds have thinned and the summer schedule food service has changed. Dinner will be served only on Tuesday night (salads) an Saturday night (Alan Minton's Supper). Wraps or hotdogs (Wednesdays) or sandwiches on Tuesdays will be served on other days. Sunday brunch will continue as before.

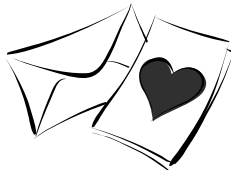
Saturday, May 5 at five o'clock will be the start of the Kentucky Derby Party. It's always a fun affair. Ger your favorite partner and win every way.

Mother's Day on May 13 will start with Bloody Mary's. Regular brunch will follow. The cost is \$8.

Memorial Day, May 28 at 5:00pm our party will start. BBQ and bridge—what a combination!

Looking ahead to June...the worldwide bridge contest will be on Friday, June 1 at 7:00pm and Saturday, June 2 at 12:30pm. Hand records and analysis sheets after the game.

Have a wonderful month—stay healthy—stay happy and play more bridge here! (especially at night!)



"The Friendly Club For All Levels of Play"

Upcoming Events

May 5—Kentucky Derby Party 5pm
May 13—Mother's Day Brunch Noon
May 28—Memorial Day BBQ
June 1,2—Worldwide Bridge Contest