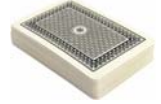


FORT LAUDERDALE BRIDGE CLUB

April 2006
Newsletter

700 NE 6TH TERRACE • FORT LAUDERDALE, FL 33304
TELEPHONE: 954-761-1577 WEB SITE: www.ftlbc.com



WEEKLY SCHEDULE

	SUN	MON	TUE	WED	THU	FRI	SAT
Afternoon	1:00pm Brunch Noon	12:30pm Lunch 11:30	12:30pm Lunch 11:30	12:30pm Lunch 11:30	12:30pm Lunch 11:30	12:30pm Lunch 11:30	12:30pm Lunch 11:30
Evening	6:00pm Dinner 5:00	7:00pm	7:00pm Dinner 6:00	No Game	7:00pm Dinner 6:00	7:00pm	7:00pm Dinner 6:00

DUPLICATE GAMES: All games are ACBL sanctioned. Card Fee: \$4 Member/\$6 Guest (eff. 1/1/06)

NON-LIFE MASTERS' GAMES: 12:30 on Tuesdays, Wednesdays and Fridays.

SOCIAL BRIDGE (Bridge Connection): 12:30 on Mondays and Thursdays.

SCRABBLE: Thursdays at 6:15; \$5 dinner (5:30). Call Claire Ullman by noon at 954-537-2755.

CLUB CHAMPIONSHIPS: 4/2:1pm 4/11:7pm 4/20:1230pm 4/24:7pm 5/5:1230pm 5/10:1230pm 5/14:6pm 5/27:7pm

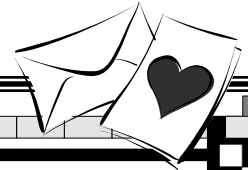
LESSONS AND LECTURES

Lois Redlick: Beginner and Intermediate lessons ongoing. Call Lois Redlick for details: 954-565-3127

Rich Waugh: Free Lecture: Tuesday mornings 11:45-12:15. Visit his website at: www.bridgeace.com

Ernie Moore: Basic conventions class Friday 9:30-11:30am \$5/session ; Duplicate strategy class Tue. 9:30-11:30am \$5/session

Jim Lackey: Free Lecture, Saturdays 11:45-12:15



Rhoda's Corner By Rhoda Schreider

It has been a wonderful winter season thanks to all of you. Hopefully our visitors have had an interesting and enjoyable time and will return next fall. A healthy and happy summer to each of you from all of us.

This month there will be some changes. Dinner will not be served on Monday or Friday nights as attendance has been declining. Sunday, Tuesday, Thursday, Saturday and Sunday it will be dinner as usual. Do try to attend one of our night games. They are small and usually a few good laughs are to be had. Remember—we are open every night at 7:00 pm (Sunday's at 6:00pm). The only exception is Wednesday night when we are closed.

Easter Sunday, April 16 at noon there will be our annual Bloody Mary Brunch. Please sign up.

PARTNERSHIP DESK: Lenny Goldstein has volunteered to manage our partnership desk. Please call the club 30-60 minutes before game time to request a partner. If you are willing to serve as a standby player, please call Lenny at the club or his home phone 954-530-2004. You should be able to get to the club in 15-30 minutes of the call and you will play for free. Please let Lenny know when you are available!

Upcoming Events

Apr. 16..... Bloody Mary Brunch, Easter Sunday

"The Friendly Club For All Levels of Play"