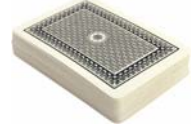


FORT LAUDERDALE BRIDGE CLUB

January 2004
Newsletter

700 NE 6TH TERRACE
FORT LAUDERDALE, FL 33304
TEL. 954-761-1577 WEB: www.ftlbc.com



WEEKLY SCHEDULE

	SUN	MON	TUE	WED	THU	FRI	SAT
Afternoon	1:00pm brunch noon	12:30pm lunch 11:30	12:30pm lunch 11:30	12:30pm lunch 11:30	12:30pm lunch 11:30	12:30pm lunch 11:30	12:30pm lunch 11:30
Evening	6:00pm dinner 5:00	no game	7:00pm dinner 6:00	no game	7:00pm dinner 6:00	no game	7:00pm dinner 6:00

DUPLICATE GAMES: All games are ACBL sanctioned. Card Fee: \$3 Member/\$5 Guest.

NON-LIFE MASTERS' GAMES at 12:30 on Tuesdays, Wednesdays and Fridays.

SOCIAL BRIDGE (Bridge Connection) at 12:30 on Mondays and Thursdays.

CLUB CHAMPIONSHIPS: Jan. 7, 12:30; Jan. 11, 12:30; Jan. 20, 7pm; Jan. 23, 12:30

SCRABBLE: Thursdays at 6:15; \$3 dinner (5:30). Call Claire Ullman by noon at 954-537-2755.

LESSONS AND LECTURES

Bridge Connection Classes: Starting Jan. 6, **Beginners classes**, Thursdays 9:00-11:00; Starting Jan. 8, **Intermediate classes** Saturdays 9:30-11:30, **Beginners classes** 12:30-3:00; **Intermediate classes** Tuesdays 7:00-9:00. All classes are \$45 for seven lessons. Call Lois Redlick for complete details: 954-565-3127.

Ernie Moore: Basic Conventions and Play of Hands, Fridays 9:30-11:30; \$5

Rich Waugh: Supervised Play, Mondays 9:30-11:00; \$5

Richard Pavlichek's Advanced Bridge Lessons being Wednesday, January 5th, 9:45-11:45am.

Free Lecture: **Rich Waugh**, Tuesdays 11:45-12:15. Visit his website at: www.bridgeace.com

Free Lecture: **Jim Lackey**, Saturdays 11:45-12:15

NEWS & ANNOUNCEMENTS

Sunday, February 6: Superbowl Party, 5pm

Monday, February 14: Annual Valentine's Dinner & Dance

Thank you to outgoing Governing Board Directors: *Gene Petrey, Jackie (Slim) Smith, Charlie Smith and David Pantalena.*

Congratulations to our newly elected Governing Board Directors: *Steve Andrews, Molly Horowitz, Drita Balentine, Ashley Walsh-Buie and Susan Raymond.*